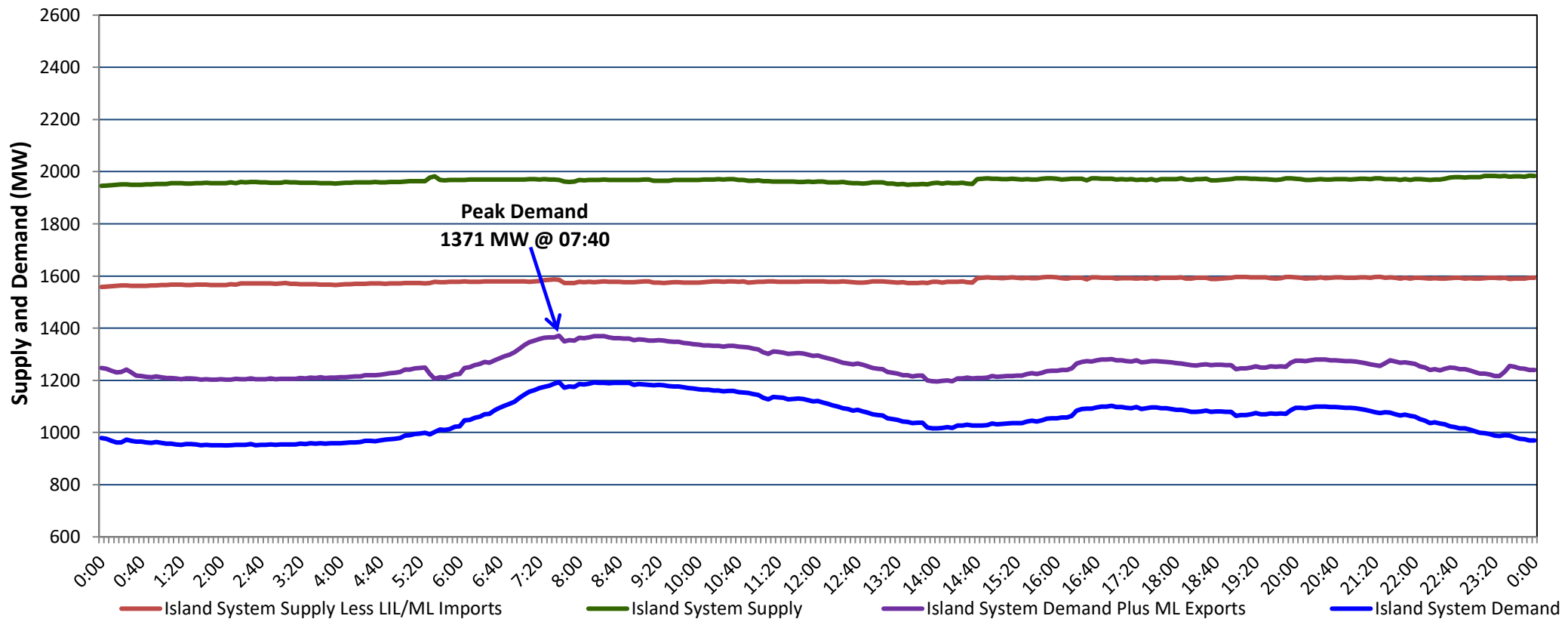


**Newfoundland Labrador Hydro (NLH)
Supply and Demand Status Report Filed Monday, April 24, 2023**

**Section 1
Island Interconnected System Supply, Demand & Exports
Actual 24 Hour System Performance For Friday, April 21, 2023**



Supply Notes For April 21, 2023

1,2

- A As of 0701 hours, March 06, 2023, Upper Salmon Unit unavailable due to planned outage (84 MW).
- B As of 2005 hours, April 02, 2023, Bay d'Espoir Unit 3 unavailable due to planned outage (76.5 MW).
- C As of 0006 hours, April 09, 2023, Holyrood Unit 3 unavailable due to planned outage (150 MW).
- D As of 1346 hours, April 16, 2023, Holyrood Unit 2 unavailable due to planned outage (170 MW).

**Section 2
Island Interconnected Supply and Demand**

Sat, Apr 22, 2023	Island System Outlook ³		Seven-Day Forecast	Temperature (°C)		Island System Daily Peak Demand (MW)	
				Morning	Evening	Forecast	Adjusted ⁷
Available Island System Supply: ⁵	2,055	MW	Saturday, April 22, 2023	1	1	1,455	1,359
NLH Island Generation: ^{4,8}	1,210	MW	Sunday, April 23, 2023	1	1	1,185	1,092
NLH Island Power Purchases: ⁶	130	MW	Monday, April 24, 2023	2	1	1,200	1,107
Other Island Generation:	230	MW	Tuesday, April 25, 2023	1	0	1,150	1,057
ML/LIL Imports:	485	MW	Wednesday, April 26, 2023	1	0	1,140	1,047
Current St. John's Temperature & Windchill:	1 °C	N/A °C	Thursday, April 27, 2023	0	0	1,145	1,051
7-Day Island Peak Demand Forecast:	1,455	MW	Friday, April 28, 2023	0	0	1,140	1,047

Supply Notes For April 22, 2023

3

- Notes:
1. Generation outages for running and corrective maintenance are included. These are not unusual for power system operations. They generally do not impact customer supply. The power system operators schedule outages to system equipment whenever possible to coincide with periods when customer demands are low and sufficient supply reserves are available. However, from time to time equipment outages are necessary and reserves may be impacted.
 2. Due to the Island system having no synchronous connections to the larger North American grid, when there is a sudden loss of large generating units there may be a requirement for some customer's load to be interrupted for short periods to bring generation output equal to customer demand. This automatic action of power system protection, referred to as under frequency load shedding (UFLS), is necessary to ensure the integrity and reliability of system equipment. Under frequency events have typically occurred 5 to 8 times per year on the Island Interconnected System and the resultant customer load interruptions are generally less than 30 minutes. With the activation of the Maritime Link frequency controller during the winter of 2018, UFLS events have occurred less frequently.
 3. As of 0800 Hours.
 4. Gross output including station service at Holyrood (24.5 MW) and improved NLH hydraulic output due to water levels (35 MW).
 5. Gross output from all Island sources (including Note 4).
 6. NLH Island Power Purchases include: CBPP Co-Gen, Nalcor Exploits, Rattle Brook, Star Lake, Wind Generation and capacity assistance (when applicable).
 7. Adjusted for curtailable load, market activities and the impact of voltage reduction when applicable.
 8. Due to limitations inherent in the design of combustion turbines, the output of combustion turbines may be reduced in the event that ambient temperatures exceed the threshold

**Section 3
Island Peak Demand Information
Previous Day Actual Peak and Current Day Forecast Peak**

Fri, Apr 21, 2023	Actual Island Peak Demand ⁹	7:40	1,371 MW
Sat, Apr 22, 2023	Forecast Island Peak Demand		1,455 MW

- Notes: 9. Island Demand / LIL / ML Exports (where applicable) is supplied by NLH generation and purchases, plus generation owned and operated by Newfoundland Power and Corner Brook Pulp & Paper (Deer Lake Power, DLP).